



ZKSoftware | ZKAccess | ZKiVision | ZKAFIS | ZKBioblock



ZKSoftware | ZKAccess | ZKiVision | ZKAFIS | ZKBioblock

#### China Headquarters

ZK Building, Wuhua Road, Gangloun, Bantian, Buji Town,  
Longgang District, Shenzhen China 518129  
Tel: +86 755-89602345  
Fax: +86 755-89602394

#### China Factory

ZKTeco (Dongguan) Industrial Park, No.26, Pingshan 188,  
Tangxia, Dongguan China

#### USA

201 Circle Drive North, Suite 116, Piscataway, NJ 08854, U.S.A.  
Tel: +1 732-412-6007  
Fax: +1 732-412-6008

#### Europe

Avenida Somosierra 24, 28700 S.S. de los Reyes, Madrid, Spain  
Tel: +34 916532891

#### South Africa

Unit 15, Wellness Corporate Park, Beethoven Street,  
Melodie, Hartbeespoort, North West, South Africa  
Tel: +27 12 259 1047

#### Brazil

Avenida Altamiro Avelino Soares 900, Castelo, Belo  
Horizonte, Minas Gerais, Brazil CEP: 31330000  
Tel: +55 31 2515-8326  
Fax: +55 11-2495-8788

#### Dubai

P.O.Box: 54823 East Wing, 5EA#710, Dubai Airport Free  
Zone, Dubai, U.A.E  
Tel: +971 4 6091 310

#### Thailand

30th Floor, Unit B4, UM Tower, 9 Ramkhamhaeng Road,  
Suanluang, Bangkok 10250 Thailand  
Tel: +66-027199154

#### Indonesia

Komp. Pergudangan Elang Laut, Tahap 3, Blok A1 no. 1  
Sentra Industri Terpadu, Pantai Indah Kapuk Jakarta  
14470, Indonesia  
Tel: +62 21 2921 8949  
Fax: +62 2921 8948

#### Vietnam

1003 can ho 167 Nguyen Phuc Nguyen Street, Ward 10,  
Dist 3, HCM City, Vietnam  
Tel: +84 1683773850

#### India

18/02, A10, elite promenade, #101 Beeresh wara Nagar  
main Road, 18th main OPP, RBI layout water Tank, J.P.  
Nager 7th phase, Bangalore-78  
Tel: +91 9650971689

#### Mexico

German Centre 6-2-17, Av. Santa Fe No. 170, Lomas de  
Santa Fe, Delegación Álvaro Obregón, 01210 México D.F.,  
México  
Tel: +52-55-52078989

#### Egypt

4 Abo El Fawares street, Taeran street,  
el hay el sabaa, Naser City, Cairo, Egypt  
Tel: +202-24055541



The Leading Provider  
of Security and Time  
Management Solutions

www.zkteco.com >>>

Copyright ©2013, ZKTeco Inc. All rights reserved.

ZKTeco may, at any time and without notice, make changes or improvements to the products and services offered and/or cease producing or commercializing them.

# Company Introduction:



ZKTeco is a leading global developer of security and time management solutions. It is subdivided into 5 distinct business segment/divisions which are known as: ZKSoftware, ZKAccess, ZKiVision, ZKBioblock and ZKAFIS. Each ZKTeco division has a dedicated team of professionals to serve worldwide customers and partners. At our state-of-the-art 50,000 square meters ISO9001-certified R&D/Trial and Manufacturing centre, we control product design, manufacturing, component assembly and logistics/shipping -- all under one roof.

ZKTeco has over 2000 people at its headquarters. And ZK has built international sales and service network, including the branch offices/subsidiaries in USA, Spain, Brazil, South Africa, Dubai, Indonesia, Mexico, Thailand, India, Egypt, Vietnam, Argentina, etc. as well as partners, distributors, dealers in over 200 countries. The global network further enhances our ability to provide local product/logistic support and service to our customers efficiently.



ZKTeco has sold over 8.5 million units and serves customers in over 200 countries. Currently ZKTeco controls 80% market share in China and 40% worldwide market share and growing. It has been awarded 85 patents and earned a reputation for technical innovation, high quality, reliability and speed-to-market. These are just a few reasons why OEM, ODM, software developers, integrators, dealers and end users turn to ZK.



E.U. Branch



S.A. Branch



U.S.A. Branch



Dubai Branch



Egypt Branch



Mexico Branch



Brazil Branch



Indonesia Branch



India Branch



Thailand Branch

ZK's footprints can be seen all over the world. Based on ZK's unrelenting pursuit for innovation and technical achievement, some of the world's famous companies adopt ZK's products. Such as:



Nowadays, each year we are repeatedly award the "Top 10 Chinese Security Brand" in the past 6 years.



2012 Top 10 Chinese Security Brand



## Time & Attendance

From an office with five employees, to a large manufacturer with 50,000, every organization has to track the work-time of its employees, control access to certain areas and quickly identify staff or materials. Because every industry is different, ZKSoftware offers a large selection of Time & Attendance solutions to manage such tasks.



## Access Control

Restricting access to sensitive areas by controlling key access points is important to organizations. ZK Readers help companies maintain security through efficient and reliable Access Control. Using card and fingerprint ZK Readers, firms can authorize which staff can open which doors on specific days or times.



## Border Security

ZKAFIS provides large-scale fingerprint matching solutions and safer, faster, accurate and convenient security services, which can be used in border inspection and make online matching more accurate and improve homeland security.



## Hotel Check-in

A simple flash of an ID card, or touch of the finger, enables guests at major hotels and resorts to access and secure rooms and facilities using our Readers.



## Airport Security

ZK Readers protect passengers, aircraft and cargo at airports worldwide by restricting access to secure areas. Only authorized staff can gain entry via face, fingerprint and/or flash card identification.



## Crowd Control & Management

At large events, crowd control and management is a major challenge. Our products are integrated with applications that read and register the tickets of concertgoers, permit only authorized staff to enter secure areas and much more.



## Locker Control

At fitness clubs, airports and storage facilities, ZK Readers work with industry applications to secure access to lockers and protect valuables, while also affording easy access for locker owners.





## Time and Attendance Management Solution

ZKSoftware devotes to developing advanced Multi-biometric and RFID time attendance products and solutions. It provides full range of solutions including various fingerprint, RFID and/or face identification time clocks, portable time clocks, time and attendance management software, etc. It can meet the demand of almost all the company of different size.

## New Products

### Biopad100

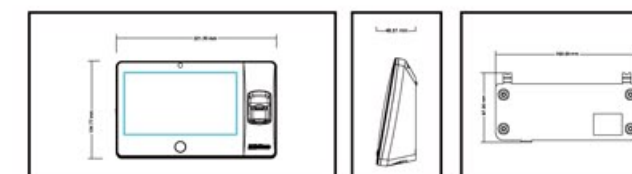


### 7 Inches Touch Screen Time and Attendance Terminal

- Card capacity: 10000
- Fingerprint templates: 6000
- Record Capacity: 300000
- Standard built-in Wi-Fi
- Built-in 300,000 pixels camera
- Functions: SMS, DST, Scheduled-bell, Self-Service Query, Automatic Status Switch, etc.
- Options: ID/Mifare/HID, 14 digit user ID, ADMS, Backup battery, SD card



Biopad100 Video



### S922

### Portable Fingerprint Time and Attendance Terminal

- Fingerprint capacity: 5000 (Standard) / 10000 (Optional)
- Card capacity: 30000
- Record capacity: 200000
- Built-in 7600 mAh battery
- IP65 rated protection grade; Shock proof (1m above the ground)
- Functions: ADMS, Work-code, DST, Scheduled-bell, Self-Service Query, Automatic Status Switch, T9 Input, etc.
- Communication: TCP/IP, USB-host
- Options: GPRS, Wi-Fi, 3G (WCDMA), Proximity Card or Mifare Card.



# Face Time Attendance Terminal

	VF300	VF600	VF700
			
Display	3 Inches Touch Screen	3 Inches Touch Screen	3 Inches Touch Screen
Face Capacity	800 (Standard)/1200 (Optional) (1:N)	800 (Standard)/1200 (Optional) (1:N)	800 (Standard)/1200 (Optional) (1:N)
ID Card Capacity	10,000	10,000	10,000
Record Capacity	100,000	100,000	100,000
Communication	TCP/IP, USB Host	TCP/IP, USB(host and client)	TCP/IP, USB(host and client)
Standard Functions	/		
Optional Function	Mifare Card.	Mifare Card.	Mifare Card.
Verification Speed	≤1 sec	≤1 sec	≤1 sec
Dimensions(W×H×T)	104.70×160.00×36.00 (mm)	104.70×160.00×36.00 (mm)	104.70×160.00×36.00 (mm)

	VF380	VF680	VF780
			
Display	3 Inches Touch Screen	3 Inches Touch Screen	3 Inches Touch Screen
Face Capacity	800 (Standard)/1200 (Optional) (1:N)	800 (Standard)/1200 (Optional) (1:N)	800 (Standard)/1200 (Optional) (1:N)
ID Card Capacity	10,000	10,000	10,000
Record Capacity	100,000	100,000	100,000
Communication	TCP/IP, USB Host	TCP/IP, USB(host and client)	TCP/IP, USB(host and client)
Standard Functions	/		
Optional Function	Mifare Card.	Mifare Card.	Mifare Card.
Verification Speed	≤1 sec	≤1 sec	≤1 sec
Dimensions(W×H×T)	104.70×160.00×36.00 (mm)	104.70×160.00×36.00 (mm)	104.70×160.00×36.00 (mm)

# Multi-Bio Time Attendance Terminal

- 4.3 inches Touch Screen, Touch Keypad
- Face capacity: 1200
- Fingerprint capacity: 3,000
- ID card capacity: 10,000
- Record capacity: 100,000
- Attendance Features: SMS, Workcode, DST, Scheduled bell, etc.
- Communication: TCP/IP, USB Host, RS232/485, Wiegand Out, Access Control interface for 3rd party Electric Lock, Door Sensor, Exit Button
- Options: Mifare card, Wi-Fi, GPRS

iFace202



iFace302



iFace402



- 4.3 inches Touch Screen, Touch Keypad
- Face capacity: 1200
- ID card capacity: 10,000
- Record capacity: 100,000
- Attendance Features: SMS, Workcode, DST, Scheduled bell, etc.
- Communication: TCP/IP, USB Host, RS232/485, Wiegand Out, Access Control interface for 3rd party Electric Lock, Door Sensor, Exit Button
- Options: Mifare card, Wi-Fi, GPRS

iFace201



iFace301



iFace401





# Fingerprint Time Attendance Terminal

## 8 inches TFT Touch Screen

- Operation System: Linux /WinCE
- Fingerprint capacity: 8,000
- Record capacity 200,000
- Attendance Features: SMS, Workcode, DST, Scheduled Bell, Photo-ID etc.
- Communication: TCP/IP, USB Host, RS232/485, and Access Control Interface for 3rd Party Electric Lock, Door Sensor, Exit Button
- High Resolution Camera, Backup Battery
- Options: GPRS, Wi-Fi, Printer

iClock2800



iClock3800



## 3.5 inches TFT Time Attendance & Access Control Serials

- Fingerprint capacity: 8,000
- Record capacity: 200,000
- Attendance Features: SMS, Workcode, DST, Scheduled bell, Photo-ID etc
- Communication: TCP/IP, RS232/485, USB Host, Wiegand In&Out, and Access Control Interface for Electric Lock, Door Sensor, Exit Button, Alarm, Door Bell, Anti-passback
- Options: ID card, Mifare card, Wi-Fi

iClock480



iClock580



iClock680



iClock700



iClock880



## 3.5 inches TFT Time Attendance Serials

- Fingerprint capacity: 8,000
- Record capacity: 200,000
- Communication: TCP/IP, USB Host, RS232/485
- Attendance Features: SMS, Workcode, DST, Scheduled bell, Photo ID etc.
- Options: ID card, Mifare card, Wi-Fi

iClock260



iClock360



iClock460



iClock660



## 3 inches TFT Time Attendance Serials

- Fingerprint capacity: 3,000
- Record capacity: 100,000
- Communication: TCP/IP, RS232/485
- Attendance Features: SMS, Workcode, DST, Scheduled bell, etc.
- Options: ID card, Mifare card

X628-C



X628-TC



A7-C



A8-C



B3-C



U160-C



U260-C



U300-C



U560-C



T4-C



T5-C



T6-C



TK100-C



DS100

## Dual-sensor Time & Attendance terminal

- Card capacity: 10000
- Fingerprint templates: 6000
- Record Capacity: 100,000
- Color TFT screen with GUI Interface
- Communication: TCP/IP, USB-host
- Options: ID/Mifare, Wi-Fi, GPRS, Photo ID, printer, Backup battery, SD card



DS100 Video

# RFID Time Attendance Terminal

## IM2500

- Operation System: Linux /WinCE
- 8 inches TFT touch screen, High Resolution Camera, Backup Battery
- ID Card Capacity: 30,000
- Record capacity: 100,000
- Communication: TCP/IP, USB Host, RS232/485
- Attendance Features: SMS, Workcode, DST, Scheduled bell, Photo-ID etc.
- Options: ID card, Mifare card, Wi-Fi, GPRS



# Time Attendance Software Solution

ZK provides total software solutions to meet different requirements, including PC-based and Web-based software.



## ZKTime.net

ZKTime.Net is a PC-based time & attendance software application which has a very user-friendly interface. With ZKTime.net users can easily create work-shifts and produce dozens of timely reports. An online comprehensive Help file is available to answer all your questions.

With ZKTime.Net your employee-time reports will be created faster and error-free.

## S680



## S880



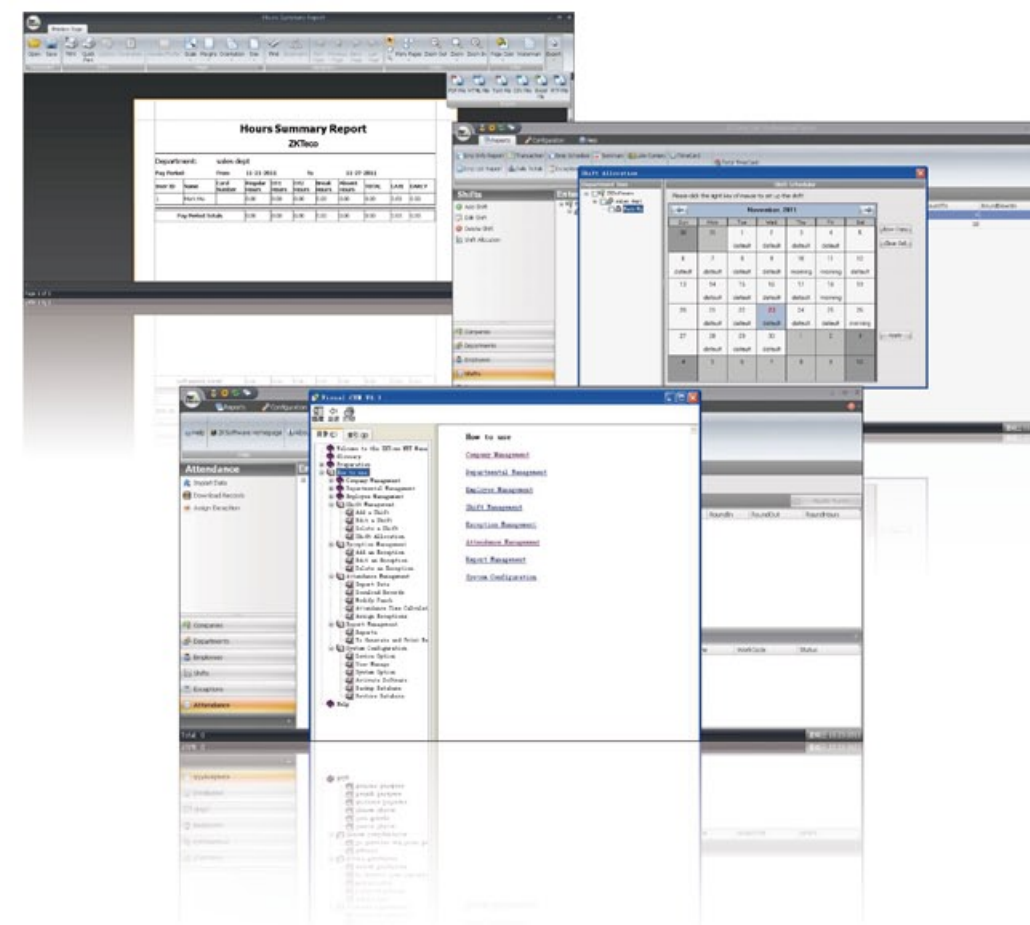
- 3.5 inches TFT
- High resolution camera(S880)
- ID Card Capacity: 10,000
- Record capacity: 50,000
- Attendance Features: SMS, Workcode, DST, Scheduled bell, Photo-ID etc.
- Communication: TCP/IP, USB Host, RS232/485, Access Control Interface for Electric Lock, Door Sensor, Exit Button, Alarm, Door Bell, Anti-passback
- Options: ID card, Mifare card, Wi-Fi, GPRS

- 3.5 inches TFT
- ID Card Capacity: 10,000
- Record capacity: 50,000
- Attendance Features: SMS, Workcode, DST, Scheduled bell, Photo-ID etc.
- Communication: TCP/IP, USB Host, RS232/485
- Options: ID card, Mifare card, Wi-Fi, GPRS

## S400



## S500







## Access Control Management Solution

ZKAccess is a division of ZKTeco, which engaged in access control products and solutions. The product line includes IP-based standalone access control, networked access control panel, readers, guard control and accessories. We provide one-stop R&D and manufacturing service for business partner.

# IP-based Standalone Access Control Terminals

## Finger Vein Identification Terminal

### FV200



- 3" TFT Touch Screen Display
- Finger Vein Capacity: 2000
- Log Capacity: 100000
- Communication: TCP/IP, RS232/485, USB Host
- Wiegand Input and Output
- Access Control Interface for 3rd party Electric Lock, Door Sensor, Exit Button, Alarm, Door Bell

## Multi-Biometric Identification Terminal

### MultiBio700



- Communication: TCP/IP, RS485, RS232, USB-host
- Face Capacity: 500
- Fingerprint Capacity: 2000
- Log Capacity: 100000
- Wiegand Input and Output
- Access Control Interface for 3rd party Electric Lock, Door Sensor, Exit Button, Alarm, Doorbell

## Face Identification Terminal

### FAC700



- Communication: TCP/IP, RS485, RS232, USB-host
- Face Capacity: 500
- Log Capacity: 100000
- Wiegand input and output
- Access control interface for 3rd party Electric Lock, Door Sensor, Exit Button, Alarm, and Doorbell

## Fingerprint Identification Terminals

### F18



- 2.4 inches TFT Color Screen
- Fingerprint Capacity: 3000
- Log Capacity: 30000
- Communication: TCP/IP, RS485, RS232, USB-host
- Wiegand Input and Output
- Access Control Interface for 3rd party Electric Lock, Door Sensor, Exit Button, Alarm, Door Bell

### TF1700



- IP65 Waterproof
- OLED Screen
- Fingerprint Capacity: 3000
- Card Capacity: 10000
- Log Capacity: 30000
- Communication: TCP/IP, RS485, USB-host
- Wiegand Input and Output
- Access Control Interface for 3rd party Electric Lock, Door Sensor, Exit Button, Alarm, Door Bell

### LA9000



- IP65 Waterproof
- Applicable to work in low temperature that range from - 40°C to 45°C
- Fingerprint Capacity: 3000
- Card Capacity: 30000
- Communication: TCP/IP, RS485
- Wiegand Input and Output
- Access Control Interface for 3rd Party Electric Lock, Door Sensor, Exit Button, Alarm, Door Bell

#### F702-S



- Fingerprint Capacity: 2200
- Log Capacity: 50000
- Communication: TCP/IP, RS485, RS232, USB-host
- Wiegand Input and Output
- Access Control Interface for 3rd party Electric Lock, Door Sensor, Exit Button, Alarm, Door Bell

#### F8



#### F8-T



#### MA500



- Metal Casing with IP65 Waterproof
- Fingerprint Capacity: 3000
- Card Capacity: 30000
- Log Capacity: 100000
- Communication: TCP/IP, RS485
- Wiegand Input and Output
- Access Control Interface for 3rd Party Electric Lock, Door Sensor, Exit Button, Alarm, Door Bell

#### MA300



- Metal Casing with IP54 Waterproof
- Fingerprint Capacity: 1500
- Card Capacity: 10000
- Log Capacity: 100000
- Communication: TCP/IP, RS485, USB-host
- Wiegand Input and Output
- Access Control Interface for 3rd party Electric Lock, Door Sensor, Exit Button, Alarm, Door Bell

#### LA2000-Venus /LA2000-Mercury



- Fingerprint Capacity: 2200/8000
- Log Capacity: 30000/200000
- Communication: TCP/IP, RS485, RS232, USB-host
- Wiegand Input and Output
- Lumidigm Venus Sensor/Lumidigm Mercury Sensor
- Access Control Interface for 3rd party Electric Lock, Door Sensor, Exit Button, Alarm, Door Bell

#### SF101



- Metal Casing
- Fingerprint Capacity: 200
- Card Capacity: 100
- Log Capacity: 30000
- Communication: RS485, RS232, USB-client
- Access Control Interface for 3rd party Electric Lock, Door Sensor, Exit Button, Alarm, Door Bell

#### X7



- Fingerprint Capacity: 200
- Card Capacity: 2000
- Password Capacity: 8 Groups
- Access Control Interface for 3rd Party Electric Lock, Door Sensor, Exit Button, Alarm, Door Bell

#### F11



- Fingerprint Capacity: 1500
- Card Capacity: 10000
- Communication: TCP/IP, RS485, RS232
- Wiegand Output
- Access Control Interface for 3rd party Electric Lock, Exit Button, Alarm

#### F6



- Fingerprint Capacity: 500
- Log Capacity: 30000
- Communication: RS485, SD Card
- Wiegand Output
- Access Control Interface for 3rd party Electric Lock, Door Sensor, Exit Button, Alarm, Door Bell

## RFID Identification Terminals

#### SC103



#### SC403



#### SC503



- Card Capacity: 30000
- Log Capacity: 50000
- Communication: TCP/IP, RS485, RS232, USB-host
- Wiegand Input and Output
- Professional Time Attendance Function including SMS, Workcode, DST, Scheduled Bell, Photo-ID etc.
- Access Control interface for 3rd party Electric Lock, Door Sensor, Exit Button, alarm, Door Bell

#### SCR100



- Card Capacity: 30000
- Log Capacity: 50000
- Communication: TCP/IP, RS485, RS232, USB-host
- Wiegand Input and Output
- Access Control interface for 3rd party Electric Lock, Door Sensor, Exit Button, alarm, Door Bell

#### SC700



- 3" TFT Touch Screen Display
- Card Capacity: 30000
- Log Capacity: 100000
- Communication: TCP/IP, USB-host
- Access Control Interface for 3rd Party Electric Lock, Door Sensor, Exit Button, Alarm, Door Bell

#### R6



- Metal Casing with IP65 Waterproof
- Card Capacity: 2000
- Password Capacity: 8 Groups
- Access Control Interface for 3rd Party Electric Lock, Door Sensor, Exit Button, Alarm, Door Bell

## Guard Tour Patrol System

### Guard Patrol Application



A guard tour patrol system is a system for logging the rounds of employees in variety of situations such as security guards patrolling property, technicians monitoring climate-controlled environments, and correctional officers checking prisoner living areas. It helps ensure that the employee makes his or her appointed rounds at the correct intervals and can offer a virtually indisputable record for legal or insurance reasons.

### Guard Patrol Terminal



#### GP100

- Fingerprint Capacity: 500
- Fingerprint Algorithm Version: ZKFinger 10.0
- Standard with ID card reader, optional Mifare card reader
- Card Capacity: 1000
- Log Capacity: 30000
- Communication: USB Client



# Access Control Panel

## Key Features:



### Truly Internal Biometric Identification:

InBIO matches fingerprints on the panels. The FR Series readers transmit fingerprint templates to inBIO via RS485 for fast and accurate matching with templates stored in the database. Wiegand inputs are also provided for traditional RFID readers.



### Door Control and More:

Along with relay contacts for controlling door locks, easily programmable auxiliary relays can be used for additional control and interface to lights, alarms, intrusion detection panels, or even extra locking devices or gate controllers.



### Communication:

The controllers can be easily installed on your network and support both TCP/IP and RS-485 communication. Auto-discovery tool allows setting and modification of network parameters directly and easily.



### Options:

Three different sizes of controllers can suit various project needs and reduce the cost of unnecessary capacity. 1-door, 2-door, and 4-door models can be mixed and matched in optimized system architecture.



### Capacity:

The system supports up to 3000 fingerprint templates, 30,000 badge users and stores up to 100,000 events and transactions. Data is preserved if there is power outage. Controller can continue operating if network connection is interrupted.



### Built-in Advanced Access Control Functions:

Anti-passback, First-Card opening, Multi-Card opening, Duress Password Entry, and Auxiliary input/output linkages are built into controller firmware.



### Lowest Total Cost:

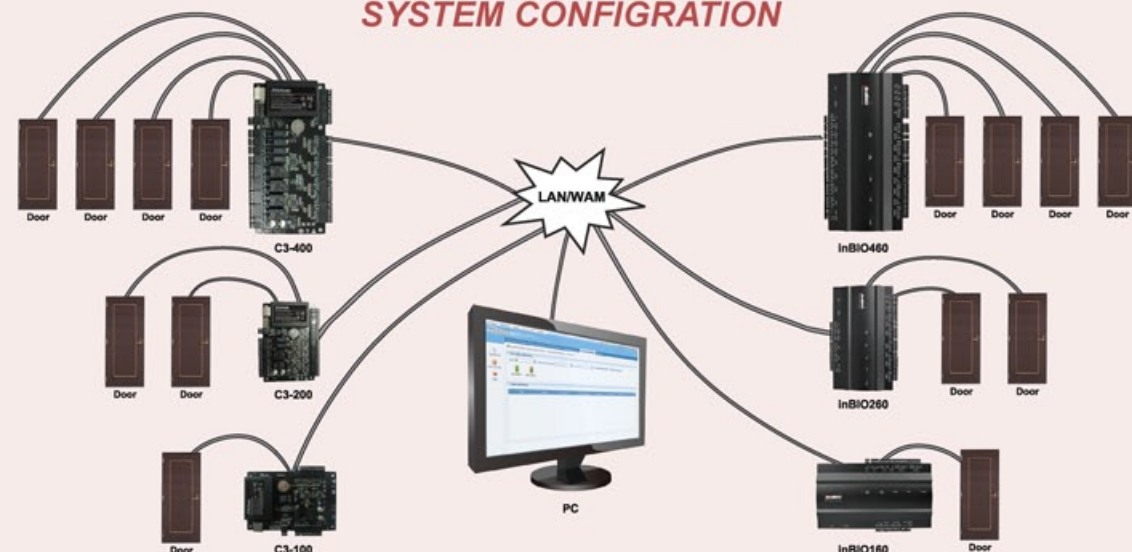
The controller firmware can be upgraded in the field. New controller features can be loaded to extend and expand your investment value without any advanced tools.



### For Software Developers:

Free SDK is available for integrators and OEMs to integrate the controller with their or existing security or personnel management applications. Upon request, ZK can customize firmware to meet any customer requirements.

## SYSTEM CONFIGURATION



## Networked Access Controller

	C3-100	C3-200	C3-400
			
Card Capacity:	30000	30000	30000
Event Capacity:	100000	100000	100000
Communication:	TCP/IP, RS485	TCP/IP, RS485	TCP/IP, RS485
Wiegand Input:	2ea	4ea	4ea
Aux.output:	1ea	2ea	4ea
Aux.input:	none	2ea	4ea

## Biometric Networked Access Controller

	inBIO160	inBIO260	inBIO460
			
Card Capacity:	30000	30000	30000
Fingerprint Capacity:	3000	3000	3000
Event Capacity:	100000	100000	100000
Communication:	TCP/IP, RS485	TCP/IP, RS485	TCP/IP, RS485
Wiegand Input:	2ea	4ea	4ea
Aux.output:	1ea	2ea	4ea
Aux.input:	1ea	2ea	4ea
Aux:	RS485 for Fingerprint Reader	RS485 for Fingerprint Reader	RS485 for Fingerprint Reader

# Application



Real-time Monitoring



Vehicle Access



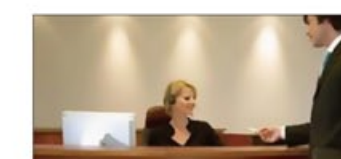
Elevator Control



Surveillance Linkage



Time & Attendance



Visitor Management

# Elevator Controller

## EC10

Elevator control and more



Model Number	EC10
Number of Floors	10 Floors
Number of readers supported	1 reader
Type of readers supported	Wiegand reader and RS485 FP reader
Card holder Capacity	30000
Fingerprint Capacity	3000
Log Event Capacity	100000
Communication	TCP/IP and RS485
CPU	32bit 400MHz
RAM	32M
Flash Memory	128M
Power	9.6V-14.4V DC
Operating Temp	0°C - 45°C
Operating Humidity	20% to 80%

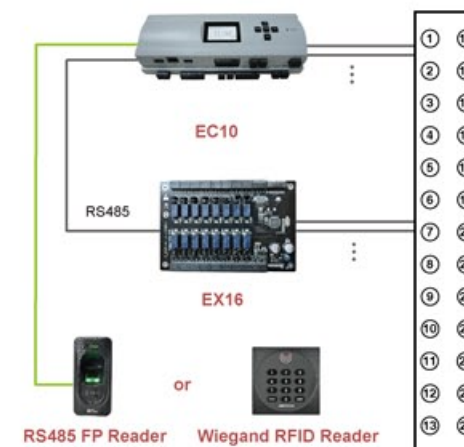
## EX16

Extension Board to control 16 floors



Elevator controller EC10 controlling 10 floors elevator keypad, extension relay board EX16 can connect with the master controller to control another 16 floors.

Elevator Control System



# Fingerprint Reader

## FR1200

- IP65 Water Proof
- Fingerprint Identification
- Read 125K Proximity Card
- Communication to Master Controller: RS485



# RFID Wiegand Reader

- Water-proof
- 125KHz Proximity/13.56MHz Mifare Card Reader
- 26bit/34bit Wiegand Out
- Extend LED/Buzzer Control



KR100E/M



KR101E/M



KR102E/M



KR200E/M



KR201E/M



KR202E/M



KR300



KR500E/M



KR501E/M



KR502E/M



KR503E/M



KR600E/M



KR601E/M



KR602E/M

## KR1000



- Water-proof
- 125KHz Proximity Card Reader
- 90-120cm Read Range
- Buzzer Control
- 26bit Wiegand Out



# Accessory

## Electric Lock



Magnetic lock



Electric Bolts



Electric Strikes

## Exit Button



K1-1



K1-1D



EX-802

## Card & Tag



## Break Glass Button



## Sensor and Siren



## RS232-485 Convertor



## ZK4500



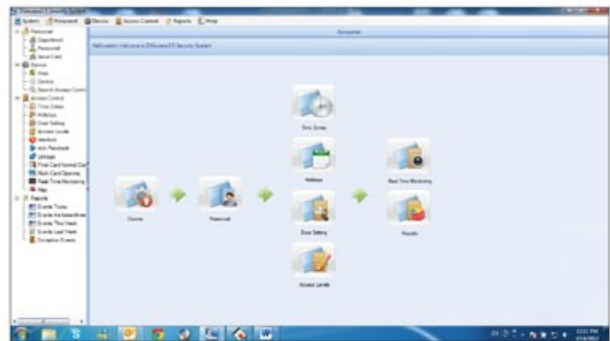
## CR10E/M



# Software

## ZKAccess 3.5

IP access control management software for SME



## ZKAccess 5.0 PRO

Integrated access control management software



**Note:** The 2013 version of FV200, TF1700, F18, F8, F702-S, MA500, MA300, LA9000, SC700, SC103 and SC503 are compatible with ZKAccess 3.5 and ZKAccess 5.0 PRO

## Software Information:

		ZKAccess 3.5	ZKAccess 5.0 PRO
System	License	Free	Yes
	System Architecture	Server/Client	Server/Browser
	DB	Access, MSSQL	MySQL, MS SQL
	Max. Device	20	1024
Access Control	Time Zone	255	255
	Access Level	No limitation	No limitation
	Anti-pass back	Yes	Yes
	Visual Map	Yes	Yes
	Event monitoring	Yes	Yes
	Linkage	Yes	Yes
	Interlock	Yes	Yes
	Multi-card opening	Yes	Yes
	First-card opening	Yes	Yes
	Passage Mode	Yes	Yes
	Video integration	N/A	Yes
	Visitor Management	N/A	Yes
Time Attendance	Elevator Control	N/A	Yes
	Work time calculation	Yes	N/A
	Shift Management	Weekly	N/A
	Holiday/Leave Management	Yes	N/A
	Report	Yes	N/A
In/Out board		Yes	N/A



## ZKiVision

**The leading provider of intelligent surveillance & security products and solutions**

Established in 2010, ZKiVision is an IP based Video Surveillance solution division of ZKTeco which focuses on providing competitive, feature rich security products like IP cameras, NVRs, Face identification and integrated with access control system.

## Why ZKiVision ?



Completed Network Video Surveillance Products Lines



Video-based Face Identification Solutions



Video Surveillance & Access Control System Integration Solutions

# IP Camera Product Line

## IR Weatherproof Bullet

ZKIR3

- Video Compression: H.264
- Highest Resolution: Megapixel (1280\*720)
- Image Sensor: 1/3.2"CMOS
- Lens: 4 or 12mm fixed lens
- IR Distance: 15 or 30m
- Sensitivity: 0.1Lux or 0Lux (IR on)
- Protection Rating: IP66
- Storage: Up to 32 GB TF Card local storage
- Standard Function: Alarm, Two-way voice intercom, 485controller, Reset
- Optional Function: POE, Wi-Fi, WDR
- Network Protocol: TCP/IP, HTTP, UDP, ARP, SMTP, FTP, DHCP, NTP



## Standard Box

ZKIP3

- Video Compression: H.264
- Highest Resolution: Megapixel (1280\*720)
- Image Sensor: 1/3.2"CMOS
- Sensitivity: 0.1Lux/F1.2
- Storage: Up to 32 GB SD Card local storage
- Standard Function: Alarm, Two-way voice intercom, 485controller, Reset
- Optional Function: POE, Wi-Fi, WDR
- Network Protocol: TCP/IP, HTTP, UDP, ARP, SMTP, FTP, DHCP, NTP



## IR Vandal-proof Dome

ZKMD3

- Video Compression: H.264
- Highest Resolution: Megapixel (1280\*720)
- Image Sensor: 1/3.2"CMOS
- Lens: 4~9mm
- IR Distance: 10~15m
- Sensitivity: 0.1Lux or 0Lux (IR on)
- Protection Rating: IP66
- Storage: Up to 32 GB TF Card local storage
- Standard Function: Alarm, Two-way voice intercom, 485controller, Reset
- Optional Function: POE, Wi-Fi, WDR
- Network Protocol: TCP/IP, HTTP, UDP, ARP, SMTP, FTP, DHCP, NTP





## Mini Dome

ZKMD4

- Video Compression: H.264
- Highest Resolution: Megapixel (1280\*720)
- Image Sensor: 1/3.2" CMOS
- Lens: 3.6mm / 6.0mm fixed lens
- Sensitivity: 0.1Lux/F1.2
- Storage: Up to 32 GB TF Card local storage
- Standard Function: Remote surveillance, TF card storage, Reset
- Optional Function: POE, Wi-Fi, WDR
- Network Protocol: TCP/IP, HTTP, UDP, ARP, SMTP, FTP, DHCP, NTP



## 6-inch High Speed Dome

ZKSD3

- Video Compression: H.264
- Highest Resolution: 480TVL
- Image Sensor: 1/4" SONY CCD
- Sensitivity: 0.1Lux
- Zoom: 18X Optical, 12X Digital
- Horizontal Speed: 0.1°~250°/S
- Vertical Speed: 0.1°~100°/S
- Tilt Movement: 0°~92° tilt
- Storage: Up to 32 GB SD Card local storage
- Standard Function: Alarm, Two-way voice intercom, 485 controller, Reset
- Optional Function: Wi-Fi



## 4.5-inch High Speed Dome

ZKSD4

- Super low Illumination
- 650TVL high resolution
- English OSD menu is optional
- High speed 360 degree continuous pan



Indoor

Outdoor

## Cube

ZKIP4

- Video Compression: H.264
- Highest Resolution: Megapixel (1280\*720)
- Image Sensor: 1/3.2" CMOS
- Lens: 6 mm fixed lens
- IR: Embedded Array IR LED
- WDR: >100db
- Sensitivity: 0.05 Lux/F1.2 at mini.
- Storage: Up to 32 GB TF card local storage
- Standard Function: Built-in microphone and loudspeaker, two-way voice intercom
- Optional function: POE, Wi-Fi
- Network Protocol: TCP/IP, HTTP, UDP, ARP, SMTP, FTP, DHCP, NTP



# Network Video Recorder

## 4 Channels NVR

ZK-NV0401

- 4-ch IP video input and 720P video record 25fps real-time
- With VGA and CVBS
- Support playback while record in one channel
- H.264 compression
- Support multi DDNS (Oray, 3322, dyndns)
- Support using mouse to conveniently control the PTZ
- With 1 SATA, support TB hard disk
- Support audio talkback



## 8 Channels NVR

ZK-NV0802

- 8-ch IP video input and 720P video record 25fps real-time
- With HDMI, SPOT, VGA and CVBS
- Support playback while record in 2 channels
- H.264 compression
- Support multi DDNS (Oray, 3322, dyndns)
- Support using mouse to conveniently control the PTZ
- With 2 SATAs, support TB hard disk
- Support audio talkback



# Analog Camera Product Line

## Day & Night IR Camera with Face Detection

ZK-SIR283F

- HD image restoration, optical frequency multiplication wide dynamic
- Digital slow shutter, light inhibition, light compensation for face detection, face list, face detection
- Digitally getting clear picture from the fog environment
- 3D/2D Noise Reduction (HDNR)
- Color scroll suppression, automatic backlight compensation, intelligent IR exposure
- 256 times digital zoom, face dynamic zoom
- RS-485 remote control, multi-layered translucent menu
- Multi-layered automatic functions (auto exposure, auto-gain, auto white balance, auto iris control, auto focus detection)
- Image quality settings (brightness, contrast, saturation, sharpness, hue)



## Day & Night 20M IR Waterproof Camera

ZK-SIR212/SIR222

- Super low illumination color CCD, 420TVL
- 30 built-in  $\Phi 5\text{mm}$  IR lamps and better night vision effect
- Night vision projection distance of 30m
- 3.6mm and 6mm lens optional
- Auto backlight compensation
- Waterproof metal body, IP66-rated



## Day & Night 20M IR Dome Camera

ZK-SMD212/SMD222/SMD282

- 420TVL / 700TVL(SMD282)
- Super low illumination color CCD
- 24 built-in  $\Phi 5\text{mm}$  IR lamps
- Night vision projection distance of 20m
- 3.6mm lens as default and 6mm lens optional
- OSD menu support, external OSD menu control line
- Light inhibition, 2D noise reduction, privacy masking
- Unique and easy installation without dismantling the base
- Waterproof metal body



## Day & Night 30M IR Waterproof Camera

ZK-SIR223/SIR283/SIR293

- 420TVL(SIR223)/700TVL(SIR283)/600TVL(SIR293)
- Super low illumination color CCD
- 30M IR distance
- Night vision projection distance of 30m
- Auto and manual backlight compensation
- 6mm fixed lens as default (4mm and 8mm lens optional)
- OSD menu support, external OSD menu control line
- Light inhibition, 2D noise reduction, privacy masking
- Waterproof metal body, IP66-rated



## Day & Night 50M IR Waterproof Camera

ZK-SIR225/SIR285/SIR295

- 420TVL(SIR225)/700TVL(SIR285)/600TVL(SIR295)
- Super low illumination color CCD
- 50M IR distance
- Night vision projection distance of 50m
- Auto and manual backlight compensation
- 8mm fixed lens as default (6mm and 12mm lens optional)
- OSD menu support, external OSD menu control line
- Light inhibition, 2D noise reduction, privacy masking
- Waterproof metal body, IP66-rated



## Day & Night 80M IR Waterproof Camera

ZK-SIR228/SIR288/SIR298

- 420TVL(SIR228)/700TVL(SIR288)/600TVL(SIR298)
- Super low illumination color CCD
- 80M IR distance
- Night vision projection distance of 80m
- Auto and manual backlight compensation
- 12mm fixed lens as default 16mm lens optional)
- OSD menu support, external OSD menu control line
- Light inhibition, 2D noise reduction, privacy masking
- Waterproof metal body, IP66-rated





### 4.5-inch High Speed Dome

ZK-SSD420

- Super low Illumination
- 650TVL high resolution
- English OSD menu is optional
- High speed 360 degree continuous pan
- IP66 rating



### 4.5-inch High Speed Dome

ZK-SSD422

- Super low Illumination
- 650TVL high resolution
- English OSD menu is optional
- High speed 360 degree continuous pan



### 6-inch High Speed Dome

ZK-SSD320/SSD330

- Super low Illumination
- 650TVL high resolution
- English OSD menu is optional
- High speed 360 degree continuous pan
- IP66 rating



### 9-inch High Speed Dome

ZK-SSD328/338

- Super low Illumination
- 650TVL high resolution
- English OSD menu is optional
- High speed 360 degree continuous pan
- IP66 rating



## Digital Video Recorder

### 4 Channels DVR

ZK-DV0401

- 4-ch video input
- With VGA and CVBS
- Support playback while record in 4 channels
- H.264 compression
- Support multi DDNS(Oray,3322,dyndns)
- With 1 SATA, support TB hard disk
- Support using mouse to conveniently control the PTZ



### 8 Channels DVR

ZK-DV0801

- 8-ch video input
- With VGA and CVBS
- Support playback while record in 8 channels
- H.264 compression
- Support multi DDNS (Oray, 3322, dyndns)
- With 1 SATA, support TB hard disk
- Support using mouse to conveniently control the PTZ



### 16 Channels DVR

ZK-DV1602

- 16-ch video input
- With VGA and CVBS
- Support playback while record in 4 channels
- H.264 compression
- Support multi DDNS (Oray, 3322, dyndns)
- Support using mouse to conveniently control the PTZ
- With 2 SATAs, support TB hard disk





# Face Capture and Recognition --- ZKiVision v4.2

ZKiVision v.4.2 software integrates the face identification algorithm v9.0 with ZKIP Camera perfectly, which can realize the function of detecting, capturing and identification 8 faces simultaneously per second. It can register the user by capturing his face automatically in real-time video surveillance and face identification, simple time and attendance management, access control linkage, alarm output and electronic map. It is ideal for securing public locations such as enterprise and public institutions, government, customs, airport, excellent residential district, large factory and kindergarten.

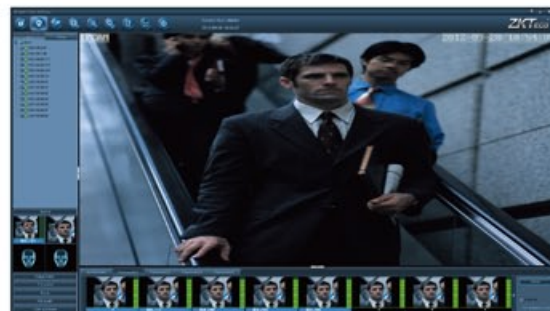
## ZKiVision 4.2 Software Interface



**Real-time faces:** "Real-time faces" is going to store all the faces detected after face identification function is started in the IPC. It will display the latest faces and store 5000 pieces faces at max. If exceeded, faces will be overlapped. If stop face identification function, "Real-time faces" storage will also stop.



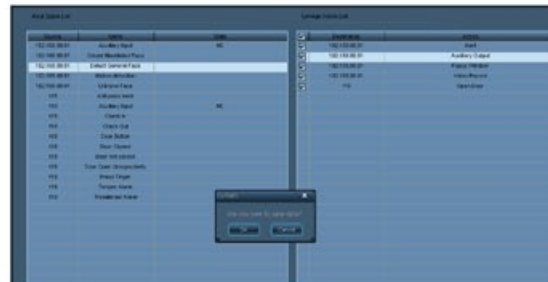
**Blacklisted User:** It can avoid of unnecessary loss with this function. Users can blacklist the person who is suspected to be bad in the software. The system will alarm when the blacklisted user appear next time.



**Initiative Register:** Capture 16 faces of multi-angle with voice prompt.



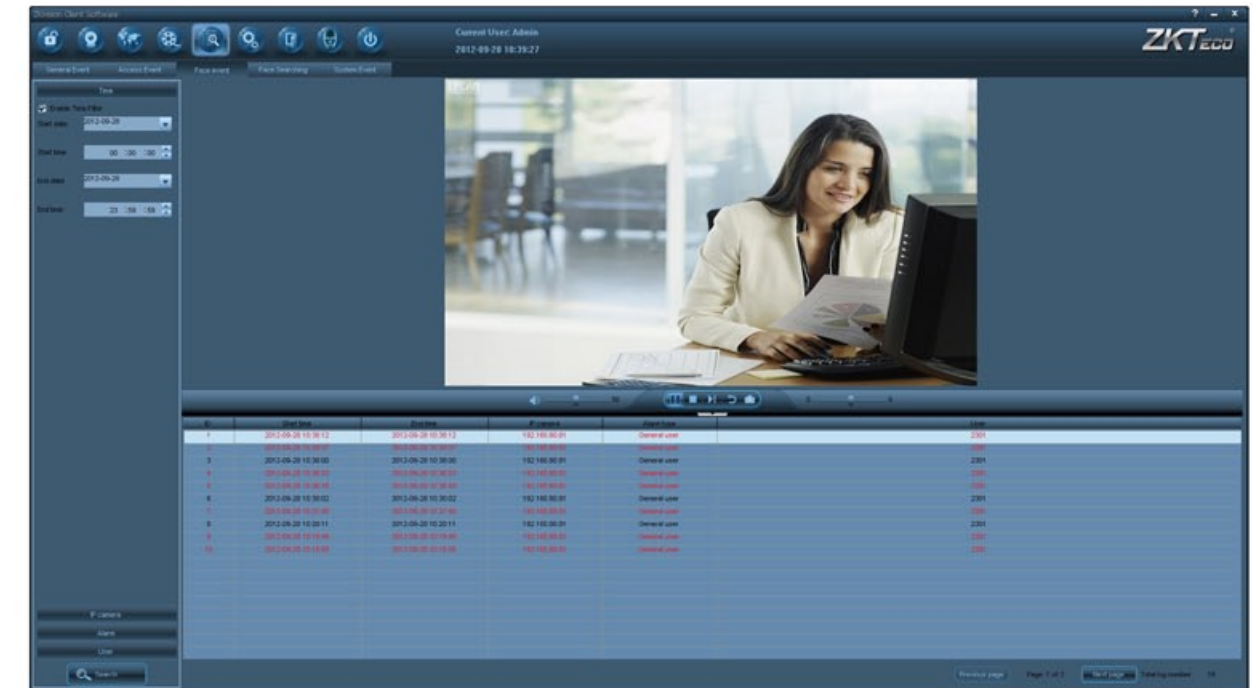
**Linkage Alarm:** Users can make linkage alarm setting after connecting cameras with access control devices. There are various kinds of input signal to trigger linkage actions such as to use detected general face to open door..



**Face Searching:** "Face searching" function is to allow users to search faces from all recording videos. In the sub-menu of "Event search", all faces in the recording videos that day will be searched out precisely by default. Users can choose precise search or quick search, also can realize filter search based on time, IPC, alarms, users, etc.



**Face Event:** Face event function is to allowed users to record and save log with face function enabled. Users can click access the related video when the log showed in red color.



## Application



Special channel for customs to identify smuggler



Patients' family identification for ICU in the hospital



Family identification for kinder garden



Criminal investigation



ATM criminal investigation



VIP reception window



Simple time attendance management for small company



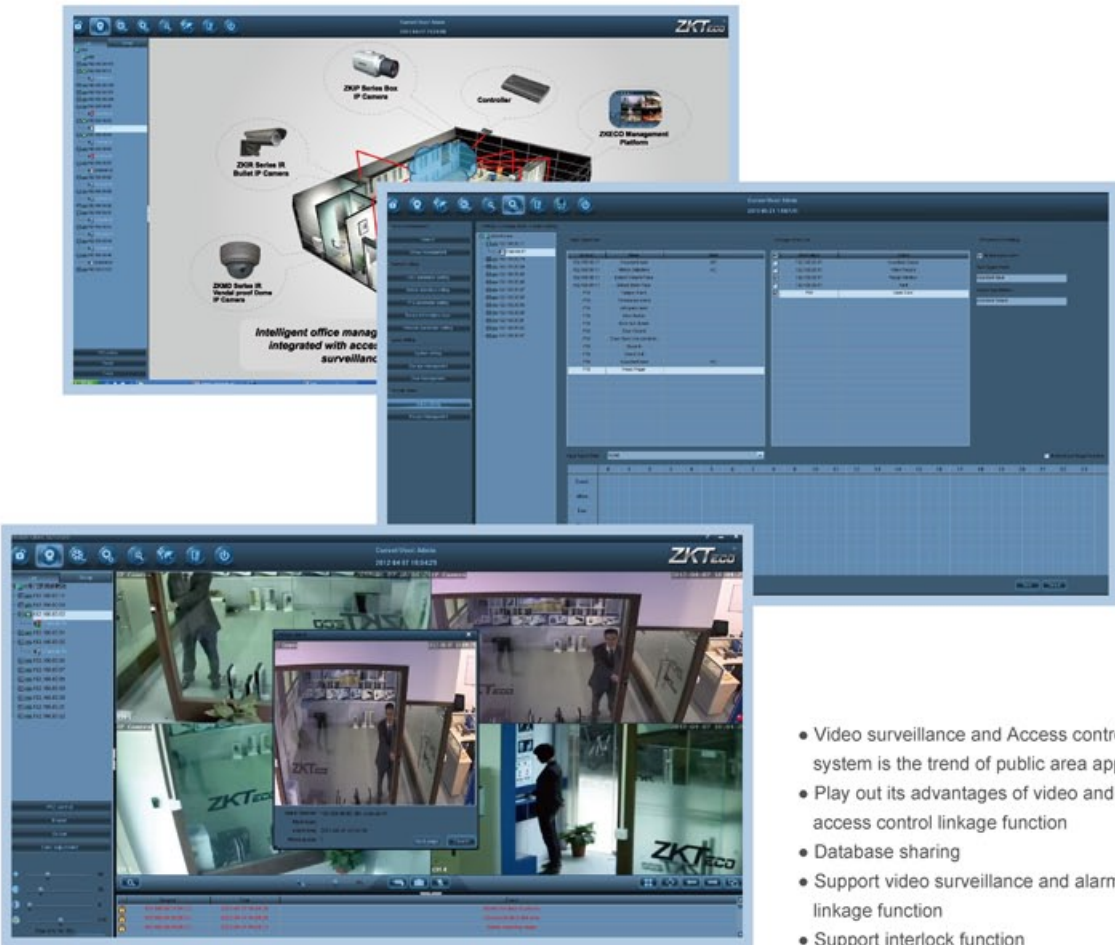
Coffer Access Control



# Video Surveillance & Access Control System Integration Solutions

## ZKiVision V3.1 Introduction

Different with other traditional surveillance system which only has simple alarms linkage and trigger activities, ZKiVision client software integrates access control system with video surveillance system perfectly. Under the system operation range, access control devices and cameras work mutually and share data with each other. This makes the alarms linkage, notifications and data query more precisely and intelligent



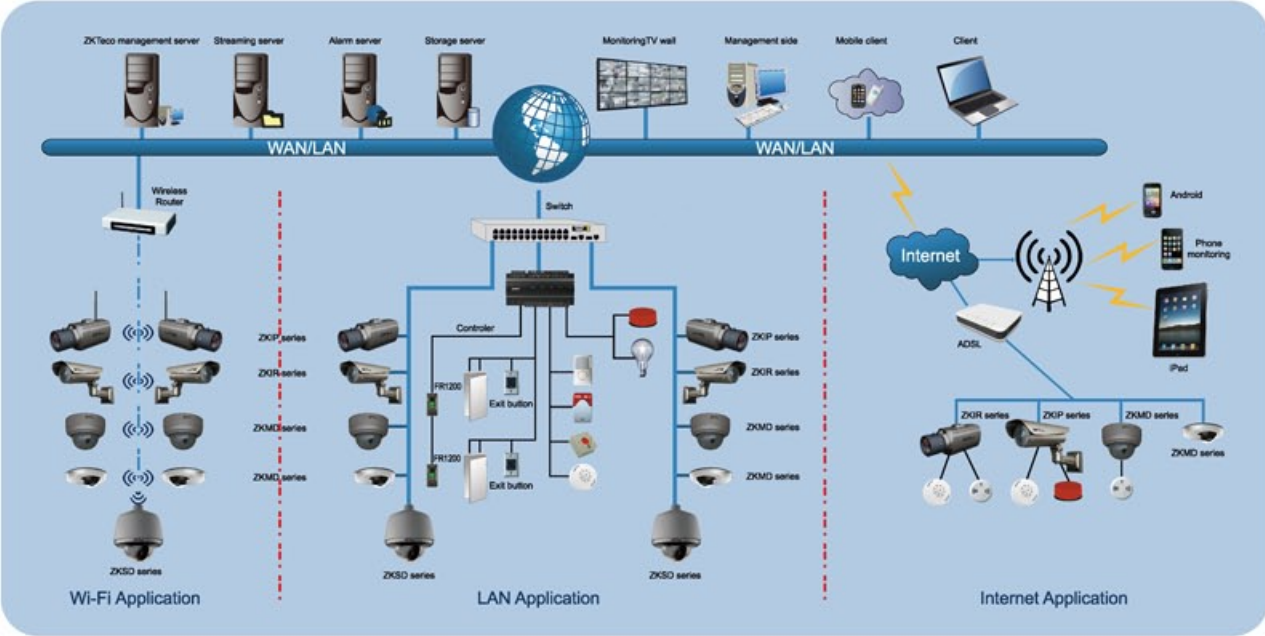
- Video surveillance and Access control system is the trend of public area application
- Play out its advantages of video and access control linkage function
- Database sharing
- Support video surveillance and alarm linkage function
- Support interlock function

## CMS (Central Management System)



- Support thousands of channel video surveillance management
- Support digital matrix
- Support disk array and internet storage
- Support streaming media forwarding
- Support multi-channel alarm management

## Security System Linkage:



## ZKiVision Mobile Monitoring App

ZKiVision enables you to realize the remote and real-time surveillance at any time in anywhere from your mobile devices.

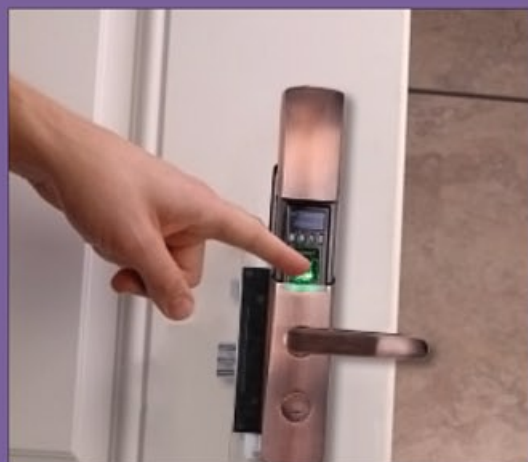
### Operation System Version Requirement

 Support Android 2.1 version and above

 Support IOS 3.2 version and above

 Support Blackberry 5.0 version and above





# ZKBioLock—Intelligent Lock Product Line

ZK started to manufacture fingerprint locks in 2005. In May 2011, an international brand was created which consists of high-tech consumer products including intelligent door lock, hotel lock, fingerprint door lock, and face recognition lock.

## Fingerprint Door Lock

### L4000/L5000

#### Features :

- Streamlined design, chrome plating
- Zinc Alloy integrated structure, strong and durable
- OLED display, multi-languages, user-friendly operation
- Access Control function. User information could be enrolled in software and upload into locks by USB disk
- Individual mechanical locking system
- Optional front panel, Black, White, Blue, Pink, Grey, Red

#### Specification:

Material	Zinc Alloy
Front Panel Colors	Black/Blue/White/Polishing
Display	OLED
Fingerprint templates	500
Password	100
Record capacity	30,000
Communication	USB flash disk
Power input	4 x 1.5V AA Battery
Backup Unlock Mechanism	Emergency battery & Mechanical key
Options	ID Card , Mifare Card



### L7000/L7000-U

#### Features:

- Zinc Alloy integrated structure, rugged and beauty, refined and elegant
- U.S standard single-latch mortise, optional German standard mortise
- DIY design, with reversible handle
- Detachable handle, hidden mechanical key slot
- Access Control function. User information could be enrolled in software and upload into locks by USB disk

#### Specification:

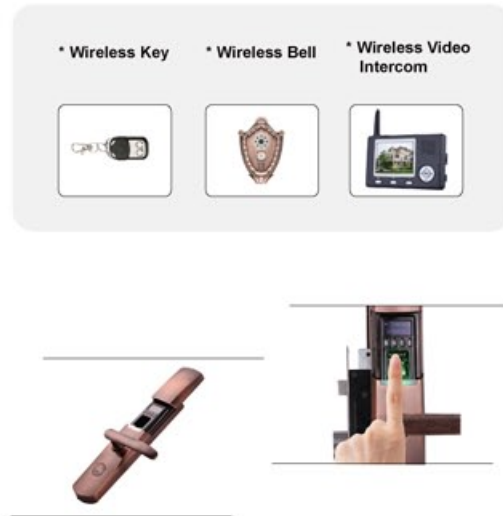
Material	Zinc Alloy
Display	OLED
Fingerprint templates	500
Password	100
Record capacity	30,000
Communication	USB flash disk (L7000-U only)
Power input	4 x 1.5V AA Battery
Backup Unlock Mechanism	Emergency battery & Mechanical key





## L9000

- OLED display and USB interface
- Slider cover, Zinc Alloy die-casting
- Verification methods: fingerprint, PIN or key
- Fingerprint templates: 500, Password: 100
- Emergency power interface
- Remote control, wireless bell and video intercom (optional)



## Hotel Door Lock

### LH1000/LH2000/LH4000/LH5000

Material	LH1000, LH2000: Stainless Steel LH4000, LH5000: Zinc Alloy	OS	Windows XP, Windows Vista and Windows7
Mortise	U.S mortise with 5 latches	Power input	4*1.5V AA battery
Type of card	13.56MHz Mifare card (S50, S70)	Low battery warning	< 4.8V
Card reader	Encoder	Card support quantity	1 ~ 99
Software	Hotel management software	Backup unlock way	Mechanical key



LH1000



LH2000



LH4000



LH5000

### LH1600/ LH1800/LH2500/ LH2600

Material	LH1600, LH1800, LH2500: Zinc Alloy LH2600: Stainless Steel	OS	Windows XP, Windows Vista and Windows7
Mortise	U.S mortise with 5 latches	Power input	4*1.5V AA battery
Type of card	13.56MHz Mifare card (S50, S70)	Low battery warning	<4.8V
Card reader	Encoder	Card support quantity	1 ~ 99
Software	Hotel management software (FREE)	Backup unlock way	Mechanical key



LH1600



LH1800



LH2500



LH2600

## HL100/HL200

- Illuminated keypad entry
- Fingerprint templates: 100, Password: 100
- Zinc Alloy, compact in size, American standard cylinder
- Verification methods: fingerprint, PIN or key
- Warning when the door is not secured
- Emergency power interface



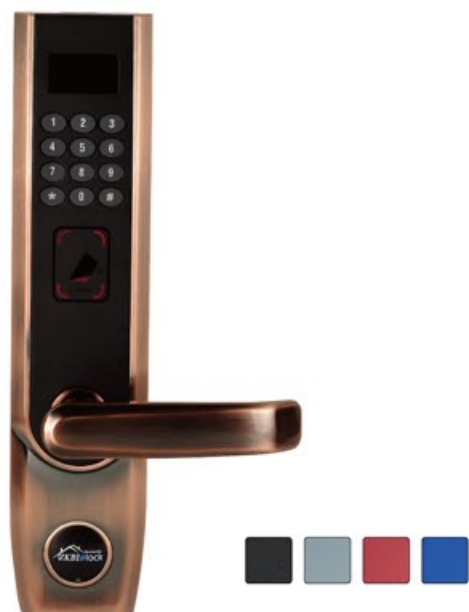
Note: If you are in North America or South America area, please contact ZK U.S.A Subsidiary to learn more about HL100 and HL200. Thank you.

# Upcoming

## RF Card + Keypad Lock

### L6500 / L6500-W

- 12 numeric keypad
- Zinc Alloy die-casting, European standard mortise
- Card 500, Password: 100, Record capacity: 30,000
- Verification methods: MF card, PIN or key
- OLED display and USB function
- Emergency power interface
- 2.4G Zigbee communication (only for L6500-W)



### L7500/ L7500-W

- 12 numeric keypad
- Zinc Alloy die-casting, European standard mortise
- Card 500, Password: 100, Record capacity: 30,000
- Verification methods: MF card, PIN or key
- OLED display and USB function
- Emergency power interface
- 2.4G Zigbee communication (only for L6500-W)

## Face Lock

### FL100

- European style, professional and elegant design
- Zinc Alloy die-casting
- Can be opened by Face, PIN, Key, and Card (optional)
- European Standard Mortise
- 3 inches TFT screen
- Faces: 100, password: 100, cards: 100(optional), record capacity 30,000.
- USB interface
- High Pixel Double camera
- Intelligent operation menu
- Access control function (optional)
- Emergency power interface



## Safe Box

### Safe100

- Biometric key-pad lock with a hidden recessed safety key override
- Good for up to 50 different users
- Pry resistant door & safe body includes bolt down hardware
- Solid steel construction
- Digital backlight keypad







## AFIS (Automatic Fingerprint Identification System) Product Line

## What's AFIS?

- AFIS--Automatic Fingerprint Identification System
- AFIS – For integrators who wish to use AFIS for Civil ID and Commercial ID projects
- Provide large-scale fingerprint matching
- Capture the single finger, rolling finger, two-slap finger, four-slap finger
- Provide safer, faster, more accurate and more convenient security services

## Why ZKAFIS?

- Advanced proprietary biometric technology
- Dedicated to hardware design for many years
- Experienced to design high quality optical sensor
- Experienced to provide AFIS OEM and ODM service
- Provide independent and professional AFIS SDK
- Best price/performance ratio

## Market Position

- Vote system
- Border inspection
- Bank security
- Hospital case management
- Business VIP
- Carport management, etc



## Single Fingerprint Scanner-U100



### Features:

- High quality of fingerprint image
- Capture single fingerprint
- High quality of dry, wet and rough fingerprints
- Operating system: Windows XP, Windows 2003, Windows Vista, Windows 7
- Portable, IP54
- Equipped with a security keyhole

### Specifications:

Image resolution	500 DPI,256 gray-levels/8bit.
Antistatic	8KV
Operating temperature	-10°C to 60°C.
Operating humidity	20% to 85%.
Interface	USB 2.0 HighSpeed (data & power)
Capturing speed	> 15 fps
Dimension (W×L×H)	145mm×67mm×54mm
Platen Size (W×L)	30mm×30mm(1.18"×1.18")



## Fingerprint 2-slap Scanner-U200



### Features:

- High quality of fingerprint image
- Capture single fingerprint, two-slap, rolling fingerprint
- High quality of dry, wet and rough fingerprints
- Operating system: Windows XP, Windows 2003, Vista, Windows 7
- Portable, IP54
- Equipped with a security keyhole

### Specifications:

Image resolution	500 DPI,256 gray-levels/8bit.
Antistatic	8KV
Operating temperature	-10°C to 60°C.
Operating humidity	20% to 85%.
Interface	USB 2.0 HighSpeed (data & power)
Capturing speed	> 15 fps
Dimension (W×L×H)	172mm×104mm×81mm
Platen Size (W×L)	43mm×42mm(1.69"×1.65")



## Fingerprint 4-slap Scanner-U400



### Features:

- High quality of fingerprint image
- Capture single fingerprint, two-slap, four-slap and rolling fingerprint
- High quality of dry, wet and rough fingerprints
- Operating system: Windows XP, Windows 2003, Vista, Windows 7
- Portable, IP54
- Equipped with a security keyhole

### Specifications:

Image resolution	500 DPI,256 gray-levels/8bit.
Antistatic	> 8KV
Operating temperature	-10°C to 60°C.
Operating humidity	20% to 85%.
Interface	USB 2.0 HighSpeed (data & power)
Capturing speed	> 2 fps
Dimension (W×L×H)	166mm×150mm×139mm
Platen Size (W×L)	85.8mm×82.5mm(3.37"×3.24")



## Application



- Voting systems**
- Registration for elections;



- Border control**
- Online matching for homeland security;
  - Identification on airports;



- Health**
- Health insurance cards;
  - Patient record systems;



- Social benefits**
- Ration cards;
  - Salary payments;



- Retail**
- Loyalty and membership programs;



- Banks**
- Prevent duplicate credit account registration;
  - Check cashing and money transfer fraud prevention;
  - Customer record to identify customer;

## ZKAFIS SDK:

- Client-Server Architecture
- Standard Hardware
- Scalable Solution
- Sensor Independent
- Database Independent
- Fast and Accurate
- OS Independent

